



Section 197 Drainage District Boundary Adjustments



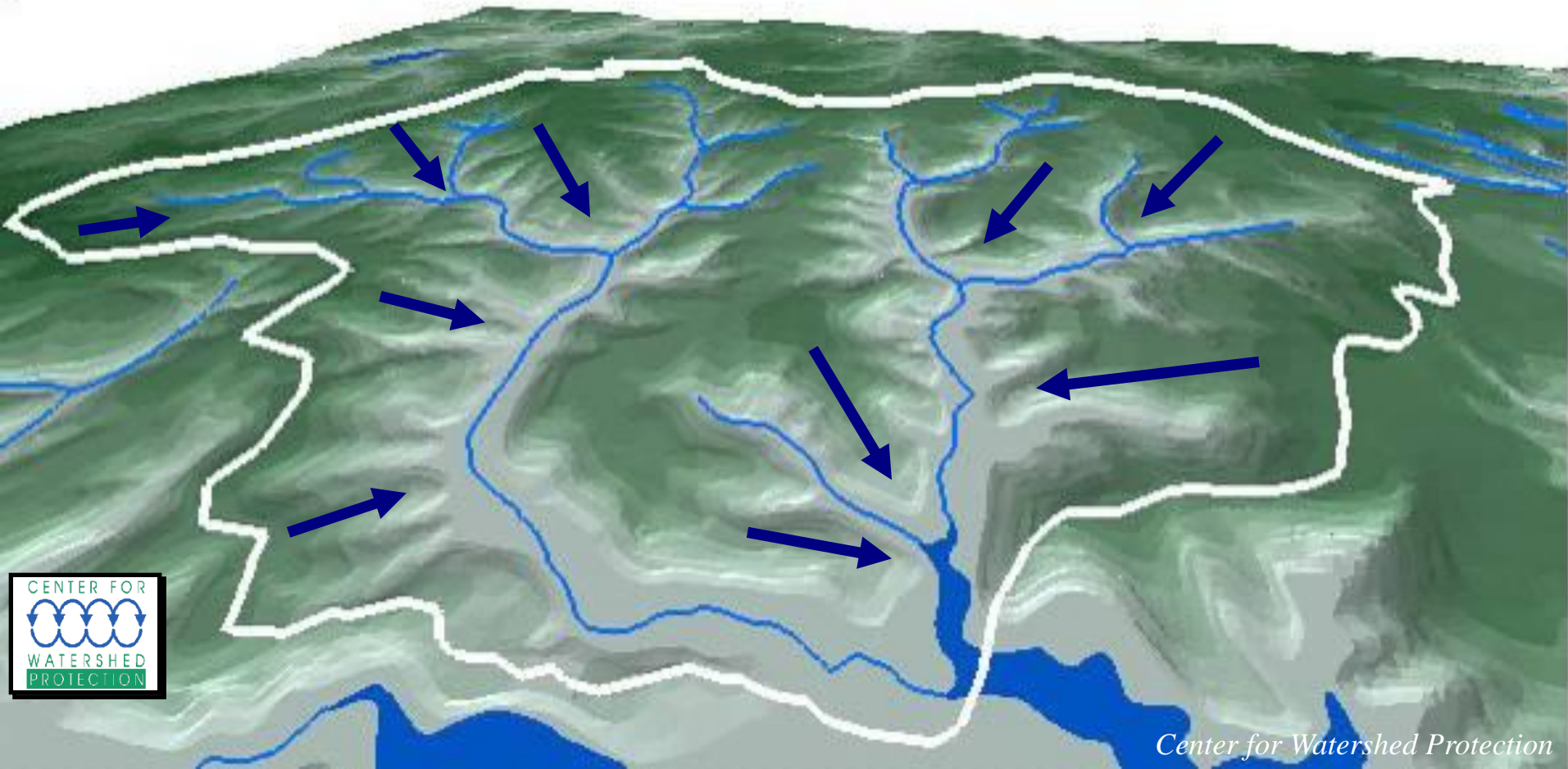
Questions to Consider

- What is a watershed?
- What is a drainage district?
- Why do drainage district boundaries need to be adjusted?
- How does the Section 197 Day of Review work?



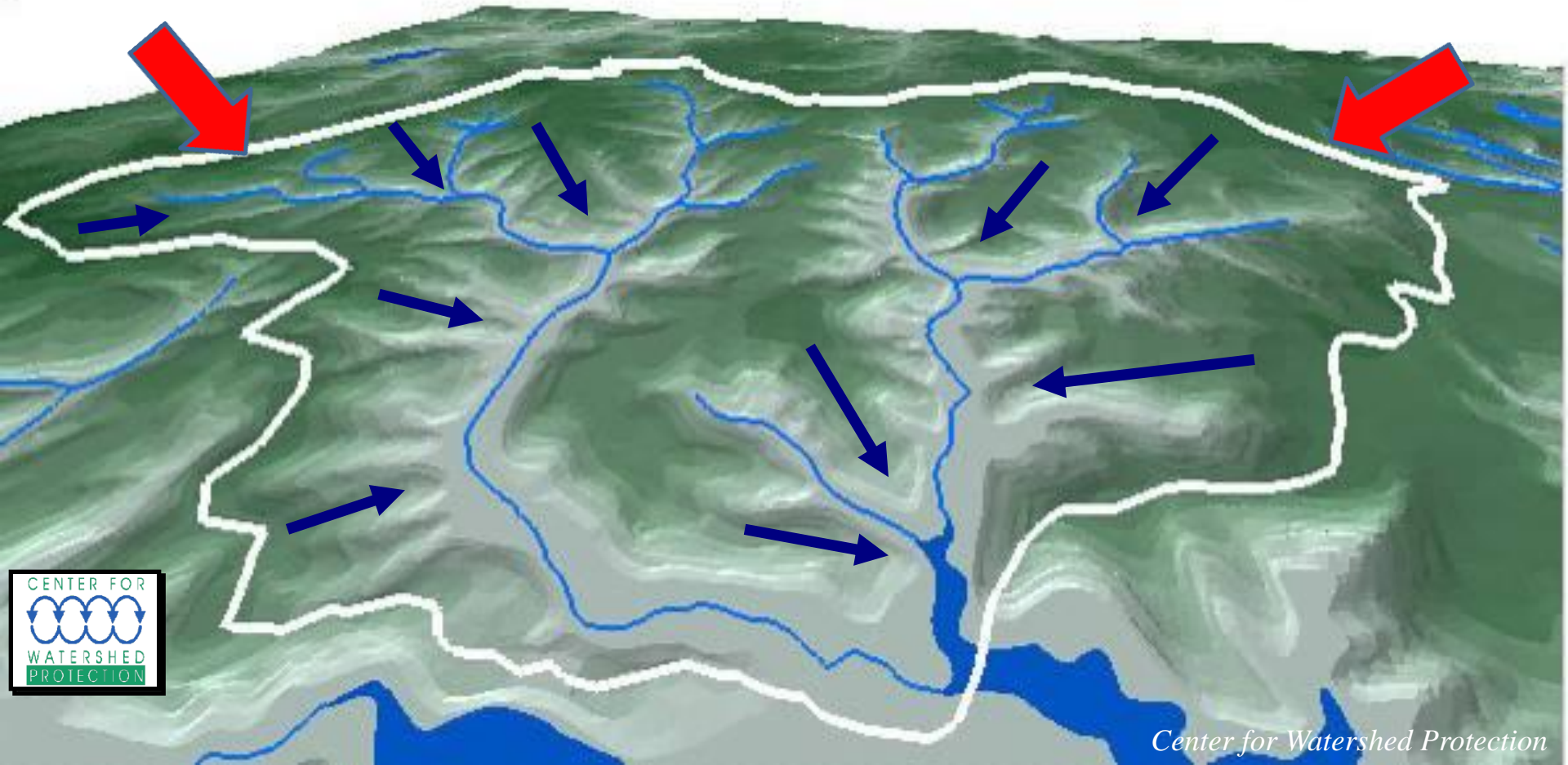
What Is a Watershed Anyway?

A watershed is the area of land that drains to a particular water body based on topography.



What Is a Watershed Anyway?

The line around a watershed is commonly called a watershed, or basin, boundary. It represents the high point of land.



Watershed Facts

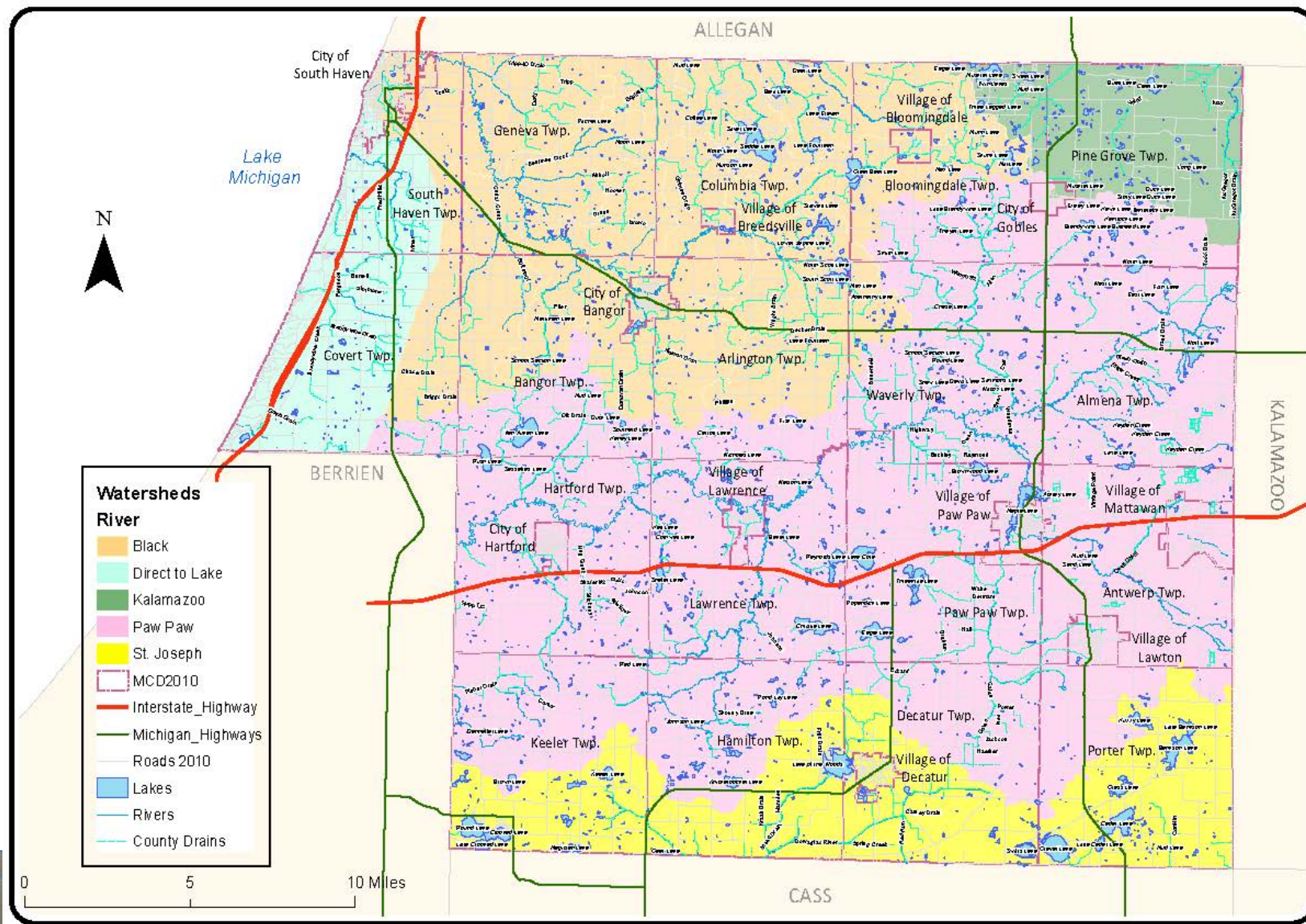
- All land areas are part of a watershed.
- Water running off land in a watershed can flow on top of the ground (surface runoff) or below the ground (groundwater runoff).
- Watersheds can be very small or quite large.



The Continental Divide is a type of Watershed Boundary. Water flows either to the Atlantic Ocean or the Pacific Ocean because of the Rocky Mountains



Van Buren County has four major watersheds: the Black River Kalamazoo, Paw Paw and St. Joseph Rivers Watershed

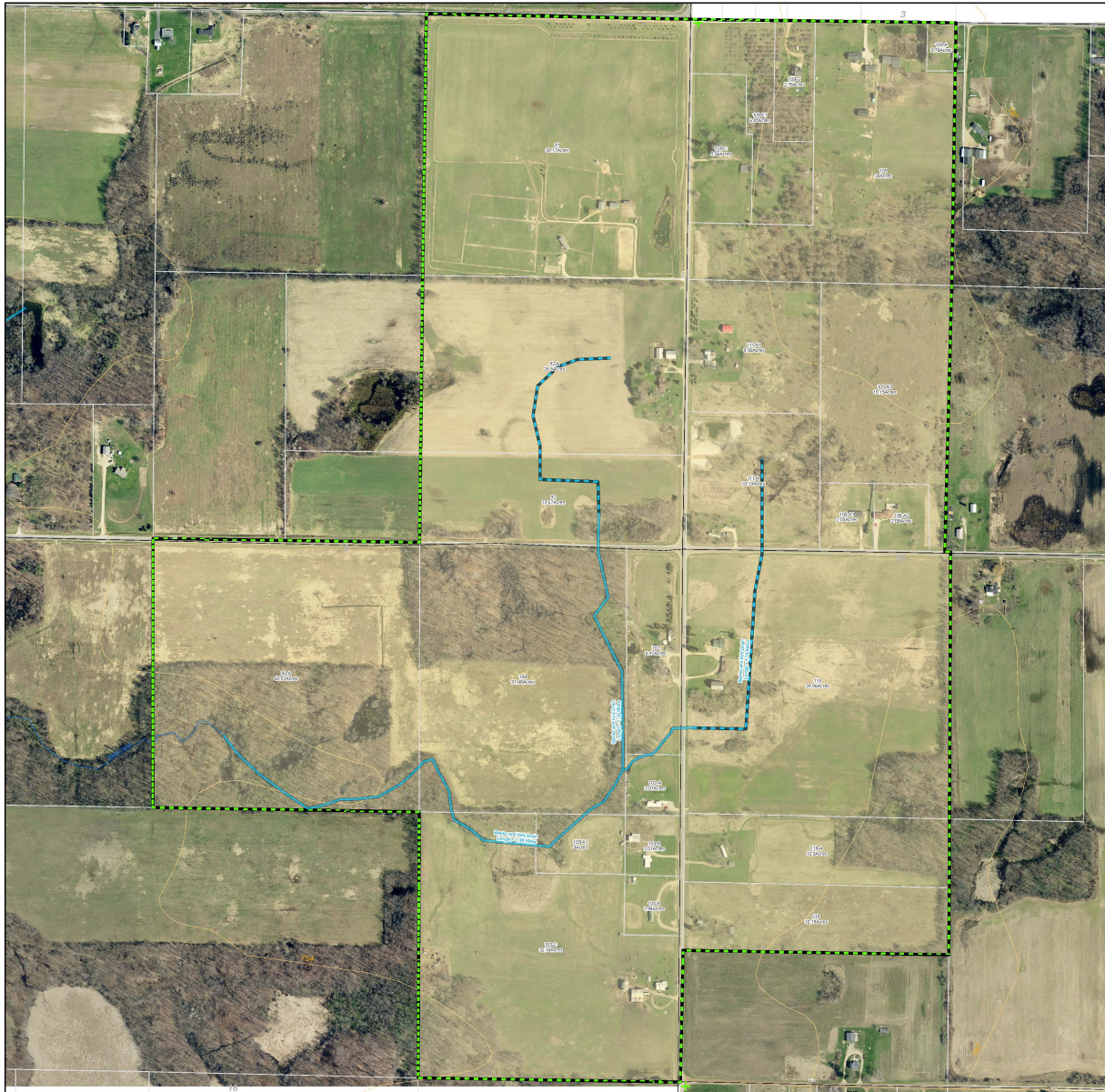


What is a Drainage District boundary?

- A Drainage District is an area of land that is assessed for creating, operating, maintaining and improving a drain under the law as governed by Michigan's Drain Code.
- The drainage district line is based on topography and on how water flows to the drain.
- Only those lands that receive benefit from the drain are assessed.



Drainage District Boundary Example



Banks & Kirk Drainage District

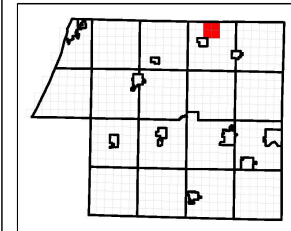


Legend

- County Drains Tiled
- County Drains
- Banks & Kirk Drain District
- Section Corners
- Rivers
- Roads
- Parcels
- Contours (ft)

0 245 490 980 Feet

Van Buren County, GIS
Copyright 2008
219 Paw Paw St., Suite 302
Paw Paw, MI. 49079
269-657-8243
www.vbco.org



Information shown on this map is not warranted for accuracy or merchantability. Reproduction of this material is not possible without written permission of Van Buren County, MI.

Revising Drainage District Boundaries

- Many Drainage Districts were established in late 1800's and early 1900's.
- The district boundaries were often described utilizing aliquot parts (rectangular section and/or property line breakdowns) to make the delineation of the boundaries simpler at the time.
- This often missed some areas that benefited from the drain and included areas that didn't belong in the Drainage District.

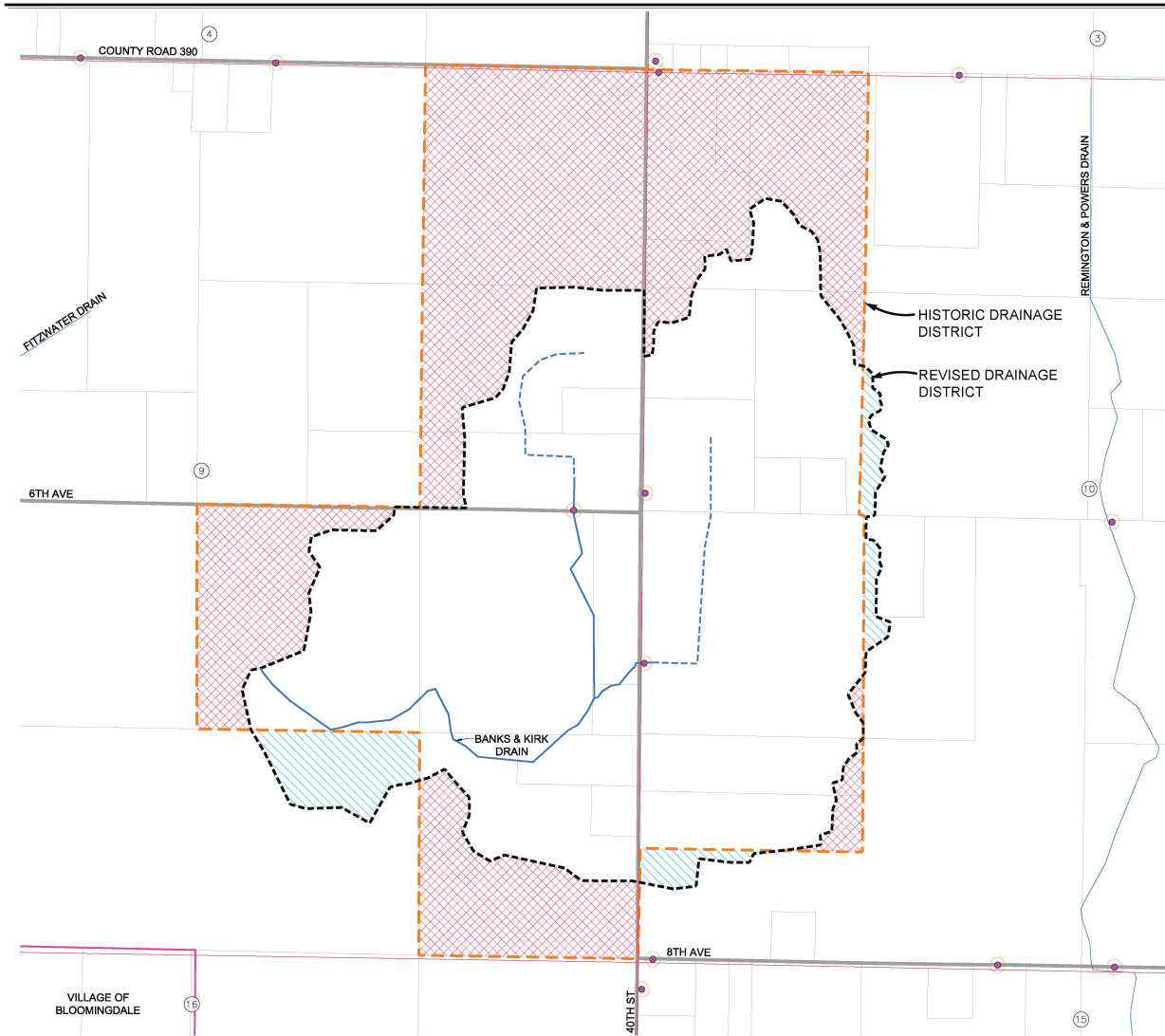


Revising Drainage District Boundaries

- Current aerial mapping technologies allows us to locate and define the areas of a drainage district much more accurately.
- The aerial maps and field studies allow us to see where the water flows into a drain.
- This process is conducted under Section 197 of the Michigan Drain Code and finishes in a Day of Review.



Banks & Kirk Historic and Revised Drainage District



BANKS & KIRK DRAIN DRAINAGE DISTRICT



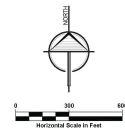
SECTIONS 9-10
T1S, R14W
BLOOMINGDALE TOWNSHIP, VAN BUREN COUNTY

DRAINAGE DISTRICT INFORMATION:

HISTORIC DISTRICT:	338.89 ACRES
REVISED DISTRICT:	224.23 ACRES
LANDS ADDED:	14.43 ACRES
LANDS REMOVED:	129.09 ACRES
DRAIN LENGTH BANKS & KIRK DRAIN	1.39 MILES

LEGEND

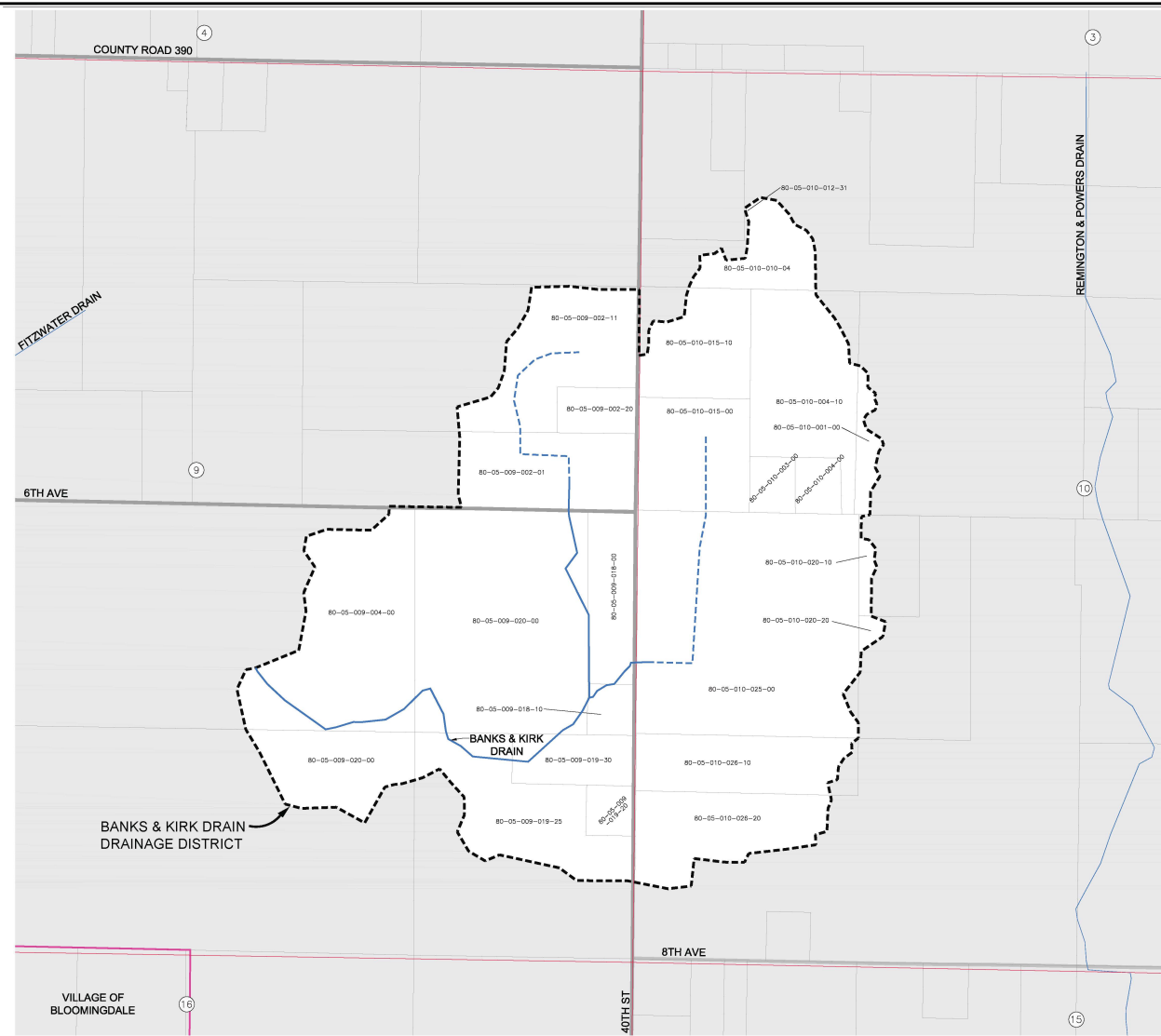
- LANDS REMOVED
- LANDS ADDED
- DRAIN ALIGNMENT (OPEN CHANNEL)
- DRAIN ALIGNMENT (ENCLOSED)
- HISTORIC DRAINAGE DISTRICT BOUNDARY
- REVISED DRAINAGE DISTRICT BOUNDARY
- BLOOMINGDALE VILLAGE LIMITS
- PARCEL LINES
- ROADS
- SECTION LINES
- TOWNSHIP LINE
- COUNTY LINE
- SECTION NUMBERS
- CULVERTS



LANDS ADDED/REMOVED MAP EXHIBIT B-1

LRE LANDS REMOVED & ADDED	2121 3 Mile Rd NW Walker, MI 49646 PH: 616-520-7000 WWW.LREMI.COM	PROJECT #: 21-080 DRAWN BY: KJB DATE: AUGUST 9, 2022 CHECKED: KJB
	<small>© 2022 LRE. All rights reserved. No part of this document may be reproduced without written permission from LRE.</small>	

Banks & Kirk Confirmed(final) Drainage District



BANKS & KIRK DRAIN DRAINAGE DISTRICT



SECTIONS 9-10
T1S, R14W
BLOOMINGDALE TOWNSHIP, VAN BUREN COUNTY

DRAINAGE DISTRICT INFORMATION:
DISTRICT AREA: 224.23 ACRES
BANKS & KIRK DRAIN LENGTH: 1.39 MILES

LEGEND

- DRAIN ALIGNMENT (OPEN CHANNEL)
- DRAIN ALIGNMENT (ENCLOSED)
- DRAINAGE DISTRICT BOUNDARY
- BLOOMINGDALE VILLAGE LIMITS
- PARCEL LINES
- ROADS
- SECTION LINES
- TOWNSHIP LINE
- COUNTY LINE
- SECTION NUMBERS



0 300 600
Horizontal Scale (in Feet)

DRAINAGE DISTRICT MAP EXHIBIT B-2

	2121 S Main Rd NW Warrior, MI 49264 Ph: 616-507-7988 www.LREMI.com	PROJECT#: 21-080 DRAWN BY: KLB DATE: AUGUST 9, 2022 QC/QC: RLB
	LRE LAND REFORM & SURVEYORS	

What is a Day of Review?

- When the Drainage District boundaries have been adjusted, all landowners affected by the change are notified.
 - Those in the district
 - Those added to the district (lands added)
 - Those removed from the district (lands removed)



What is a Day of Review?

- Those affected by the adjustments will be mailed a notice informing them of the following:
 - The properties affected
 - The date and place a Day of Review will be held
- The Day of Review is an opportunity to meet with the Drain Commissioner's staff and consultants to learn more of how their property is affected.





For questions and more information, please contact the office of the Van Buren County Drain Commissioner, Joe Parman at (269) 657-8241.

Photo courtesy of Richard Burkhart - 1st Place Winner of Kalamazoo River Photo Contest and 1st Place Winner of the EPA National Photo Contest